

ALWAYS STEP
AHEAD IN TECHNOLOGY

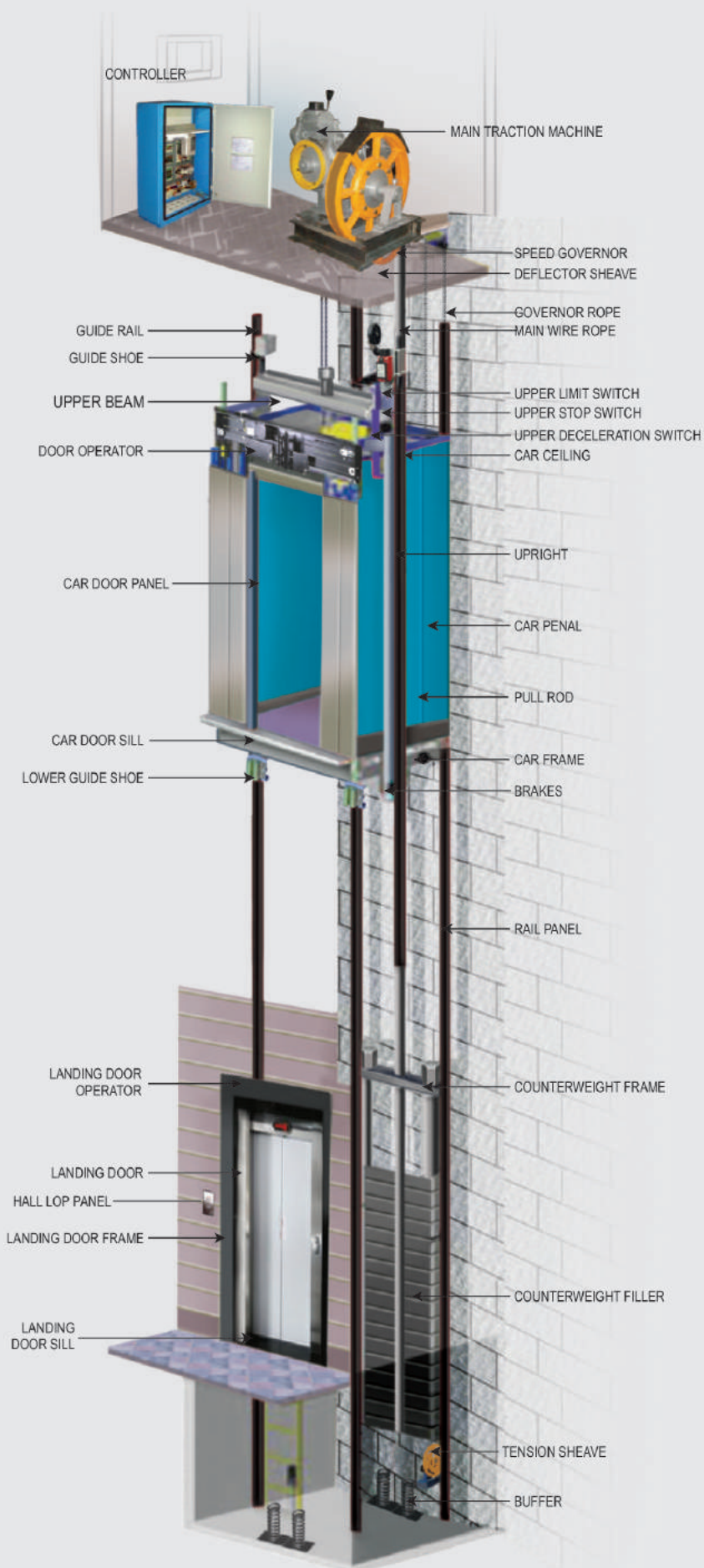
TECHNO



OUR ELEVATOR PRODUCTS

- ↑ PASSENGER LIFT
- ↑ PANORAMIC LIFT
- ↑ HOSPITAL LIFT
- ↑ GOODS LIFT
- ↑ MRL ELEVATORS
- ↑ HYDRAULIC ELEVATORS
- ↑ CAR STACKERS
- ↑ HOME LIFT
- ↑ ESCALATOR

WHENEVER IT
COMES TO
ELEVATORS ONE
NAME MEANS
QUALITY IN ANY
LANGUAGE
TECHNO





MODEL 01



INTERNAL WALL LAYOUT
Layout 01
Material : SS Hair Line

FLOORING
PATTERN 01
MATERIAL : PVC Material

CEILING
DESIGN 02
MATERIAL : SS Hair Line



MODEL 02



INTERNAL WALL LAYOUT
Layout 02
Material : MS Powder Coated

FLOORING
PATTERN 01
MATERIAL : PVC Material

CEILING
DESIGN 01
MATERIAL : MS Powder Coated



MODEL 03

PASSENGER
CAPACITY

03-30



INTERNAL W ALL LA YOUT
Layout 03
Material : SS Hair Line
SS Designer

FLOORING
PATTERN 04
MATERIAL : PVC Material

CEILING
DESIGN 07
MATERIAL : SS Hair Line



MODEL 04



INTERNAL W ALL LA YOUT
Layout 04
Material : SS Hair Line
SS Designer

FLOORING
PATTERN 02
MATERIAL : Marble Finish

CEILING
DESIGN 04
MATERIAL : SS Hair Line



MODEL 05



INTERNAL W ALL LA YOUT
Layout 05
Material : SS Hair Line
SS Designer
& Mirror

FLOORING
PATTERN 01
MATERIAL : Marble Finish

CEILING
DESIGN 05
MATERIAL : Black Mirror



MODEL 06



INTERNAL W ALL LA YOUT
Layout 06
Material : MS Powder Coated
Wooden Finish
& Mirror

FLOORING
PATTERN 05
MATERIAL : Marble Finish

CEILING
DESIGN 03
MATERIAL : MS Powder Coated



MODEL 07

PASSENGER
CAPACITY

03-30



INTERNAL W ALL LA YOUT
Layout 07
Material : Gold Hair Line
& Mirror

FLOORING
PATTERN 01
MATERIAL : Real White Marble

CEILING
DESIGN 09
MATERIAL : Gold Mirror



MODEL 07



INTERNAL W ALL LA YOUT
Layout 08
Material : Black Hair Line
Black Glass

FLOORING
PATTERN 01
MATERIAL : Real Wood

CEILING
DESIGN 08
MATERIAL : Black Mirror



WHAT IS CAPSULE ELEVATOR, HOW TO CHOOSE CAPSULE ELEVATOR

Capsule Elevator is essentially installed at a place where elevation of building is to be enhanced with display of moving lift and passenger is provided with panoramic view of surroundings. Capsule elevator normally comes in 5 and 3 Glass panel.

Capsule Elevator is normally preferred in shopping malls (to give view of items displayed), 5 star hotels (to provide lobby view) and high rise residential buildings.



PASSENGER
CAPACITY

08-20

- Made from S.S./M.S. with vision panel.
- Color-Powder coated, Elegant looks, Light in weight and variable speed.
- Controller Full Proof to voltage (PLC or Solid state) with fully collective- selective system.
- AC VVVF drive for jerk free operation & for variable speed.
- Overload indication and Auto Door announcing system.
- Avail Inverter facility for single base at time of Power failure.
- Push Button Luminous type highly attractive as well as durable.
- Facility Floor Position Indication at the floors as well as in cabin.





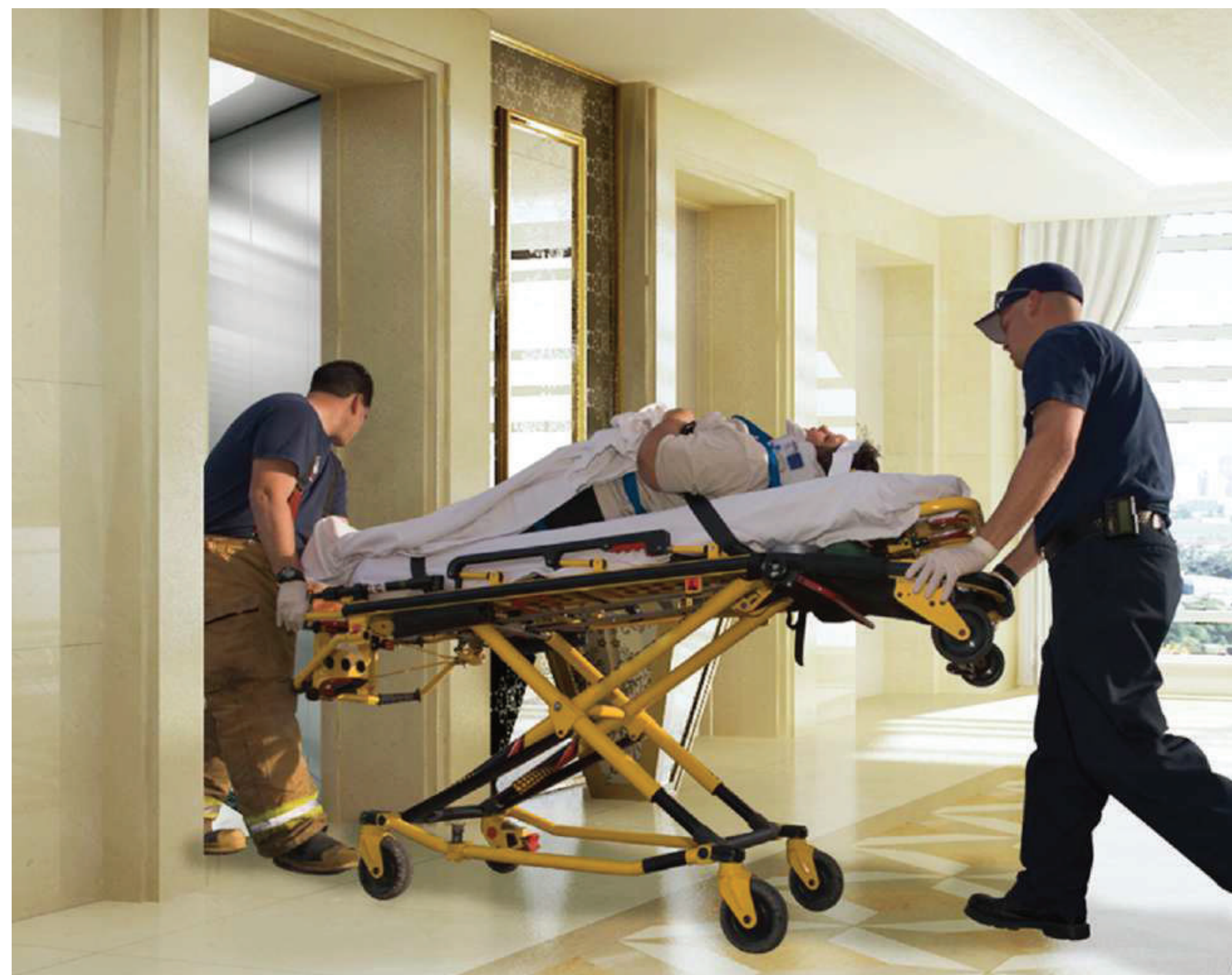
These automatic lifts are built specially for usage by hospitals. Stretchers can be accommodated. Cabin if required - can be washed or fumigated there is no jerk in starting or stopping. The range from 13 persons to 40 persons with the minimum size beginning from 3' x 7'. The cabin walls can be of M. S. Painted, M. S. Powder coated or hairline brush finished stainless steel collapsible channel gates or swing doors with glass vision windows can be provided. Swing door be varied from floor to floor to suit the decor. Automatic doors can also be provided.

PASSENGER
CAPACITY

10-26

SPECIAL
FEATURE

- AUTO LEVELING TO ENSURE SMOOTH MOVEMENT OF PASSENGERS
- LARGE OPENING OPTIONS FOR EASY ACCESS
- RESCUE SYSTEM FOR POWER CUTS
- NON STOP FUNCTION FOR EMERGENCIES
- DESIGNS TO ADD BRIGHTNESS IN THE HOSPITAL
- 24X7 SERVICE





GOODS ELEVATOR

Techno has been successful in implementing its technical expertise to install over 1200 heavy goods elevators as per customer requirement. We have completed prestigious customized jobs in record time, including installation of 16 MT elevator, 4 meter opening auto door and other Non-Standard elevator requirements. We are able to exceed safety standards and provide an all-round solution due to our in house design team and world renowned software digipara.

KG LOAD
CAPACITY 500 to 16000





SPECIAL FEATURE

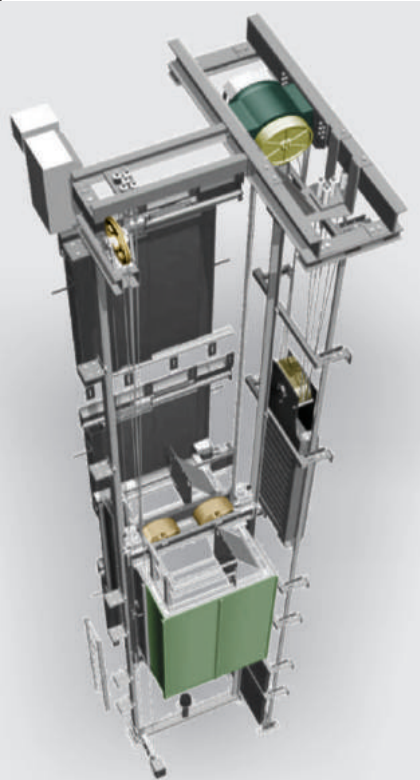
- SOLUTIONS AVAILABLE IN MRL, GEARED AND HYDRAULIC
- DUST AND WATER PROOF OPTIONS AVAILABLE
- AUTO LEVELING FOR SMOOTH MOVEMENT
- REMOTE CONTROL DOOR OPERATIONS
- DOOR OPENING UPTO 4 METERS
- AC
- FIRE PROOF / SAND PROOF / BIRD PROOF
- RANGE FROM - 1 TO 16 MT
- CUSTOMIZED CABIN





MRL MACHINE

Brings you a revolutionary concept in the field of elevators to give you absolute freedom in designing - MRL -Machine Room Less Elevators! Our exclusive Machine room less elevators brings aesthetic enhancements for you structure.

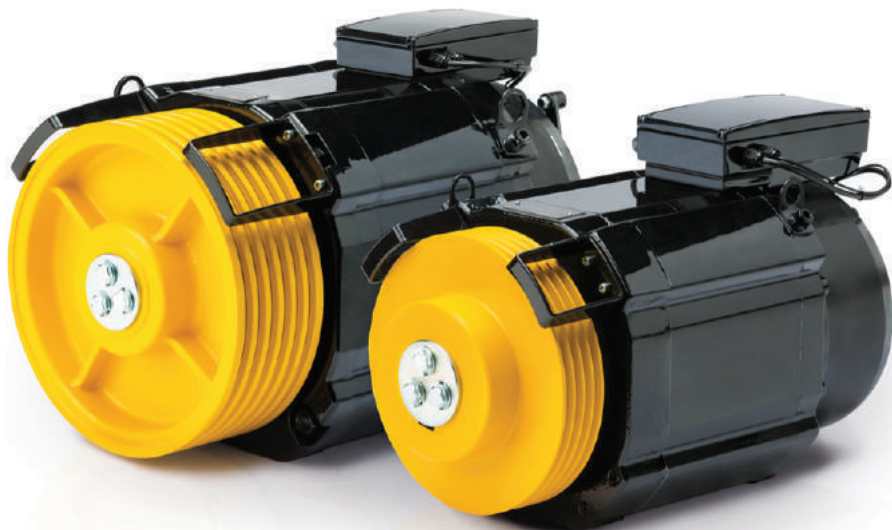
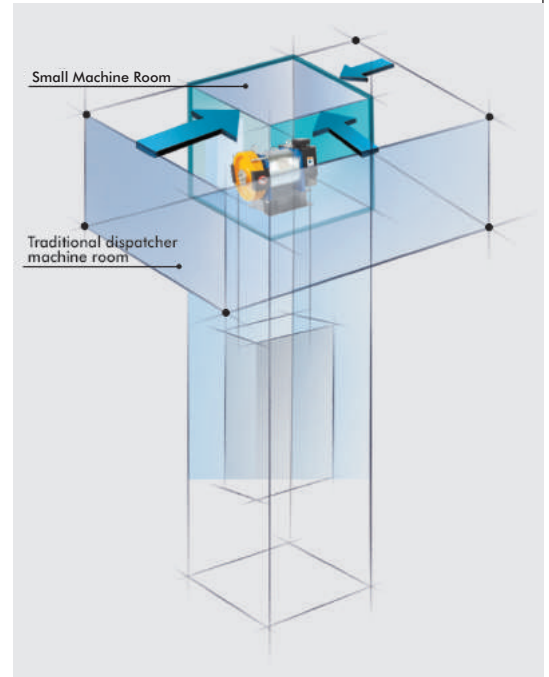


LESS SPACE LESS ENERGY MORE FLEXIBILITY

ADVANTAGES

- LATEST TECHNOLOGY IN THE WORLD
- SMOOTHEST TRAVEL
- ABSOLUTE FREEDOM IN BUILDING DESIGNS
- SUBSTANTIAL SAVING ON ELECTRICITY COST
- SAVE THE CONSTRUCTION COST
- MORE SAFE

Techno was one of the first companies in India to launch the Gearless technology. A project very dear to our chairman, we have expanded our MRL machines range upto 5 tons. We use state of the art precision equipment to manufacture and test this product. Though the PMSM Technology is just making its mark in the mass elevator market, techno has been using this technology since a decade and has successfully implemented this across other products such as motors and solar pumps as we'll.



RANGE OF HEAVY MRL

SPEED
UP TO 1 MPS
ROPING
2:1
ROPE DIA
10 / 13 / 16 MM
SHEAVE DIA
400 / 520 / 640 MM



GREEN
ENVIRONMENTAL
PROTECTION



SPACE
SAVING



EFFECTIVE
AND
ENERGY-SAVING



LOW NOISE

PASSENGER
CAPACITY 04-26

LOAD
CAPACITY UP TO 5 TONNES

Compared with traction lift, hydraulic has the following obvious advantages

Flexible setting of the machine room position

Top machine room is not needed. A machine room can be flexibly set within 10 meters ranges near the shaft which more complies with the individual design requirements of the constructions.

Wide loading range, strong adaptability

Large car and tonnage design, maximum carrying ability reaches to 2 tons.

Saving space and energy consumption, reducing the cost

Counterweight device is not needed, which increases the utilization rate of the hoistway and greatly saves the construction space and costs.

Meanwhile, when the lift is going downwards, depending upon the work done by the cabin's own weight, no electricity is consumed.

The highest safety and reliability

Apart from all the safety protection devices of the traction lifts, we additionally add the multiple hydraulic circuit protection systems such as safety valve, limited speed disconnecting valve etc.

The products are of the compact structure, low fault rate, easy for the daily maintenance.

PASSENGER
CAPACITY 06-12

HYDRALIC ELEVATOR



GEAR MACHINE

PASSENGER
CAPACITY 05 -20



TECHNICAL DETAILS

SPEED

0.5 to 1 MPS

ROPING

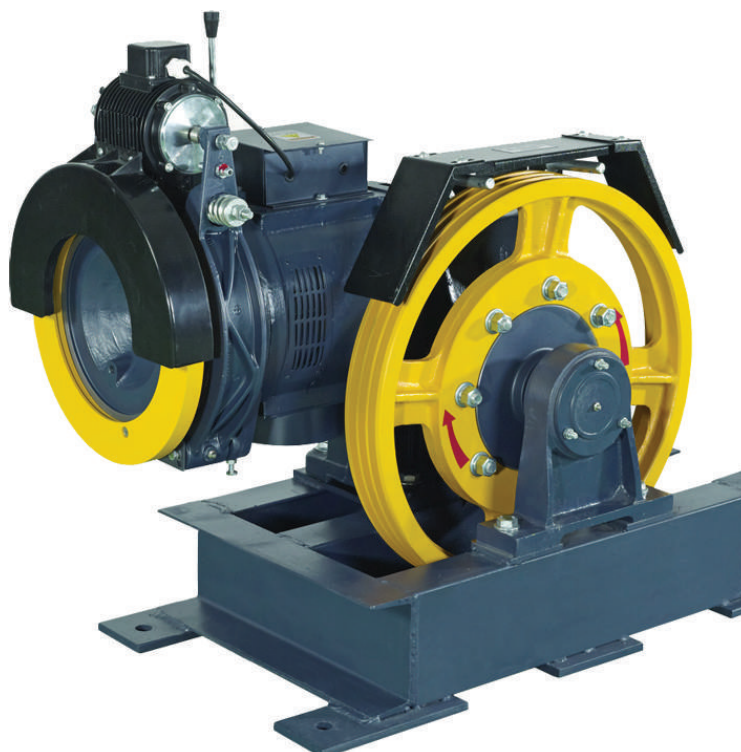
1:1, 2:1

ROPE DIA

10 to 13 MM

SHEAVE DIA

In Inch - 21, 22, 25





Two Car parking System :

Salient Features :

This system features a pallet that is lifted up after the car is loaded. thus additional parking can be made available in the space below the loaded pallet. Both indoor and outdoor installations are possible. Installation can be done on simply flat area with no additional architectural work. These system are hydraulically operated. Preferably these system are valet parking systems.

Characteristics of the system :

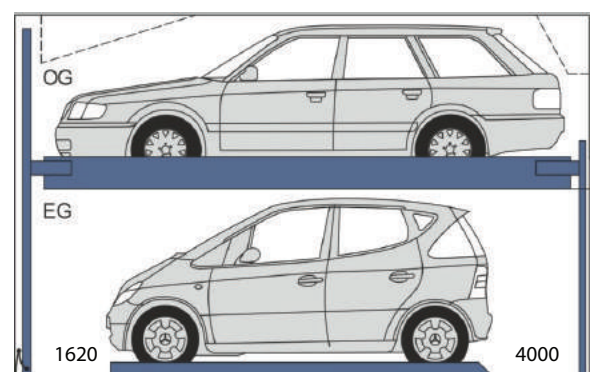
- Saves Land area and take full use of the current space to raise the number of parking cars.
- The Structure is simple, united and easy for operation
- Suitable for Car Models-Sedan for all levels & SUV for only ground level.
- Adapted Places : Apartments, yards & lower height of basement, IT parks,
- Hotels. It can be used both indoor & outdoor.

These are meant for parking two passenger cars one over the other and are standard units for accommodating two cars in the space of one. These can be installed in a series one besides another.

Technical Specification

Product Description-2 Pole Hydraulic Car Stacker (1+1)

Model	TSR-001
Stall Length	4.0 Meter
Stall Width	2.2 Meter
Pole Height	3.4 Meter
Max Travailing Height	2.0 Meter
Rated Lifting Capacity	2000 kg
Rated Speed	Up 0.04 M/S, Down 0.05 M/S
Operation	Hydraulic Power Pack with 2HP Motor, One Cylinder with Control Panel (Per Unit) Operated by Key
Electrical Requirment	3-Phase 415V 50Hz/1-Phase 220V

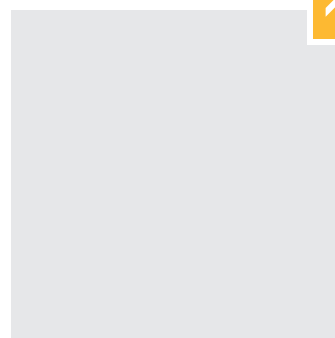
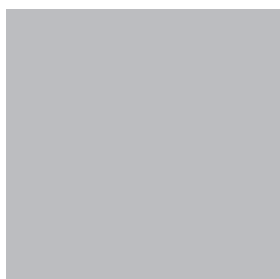
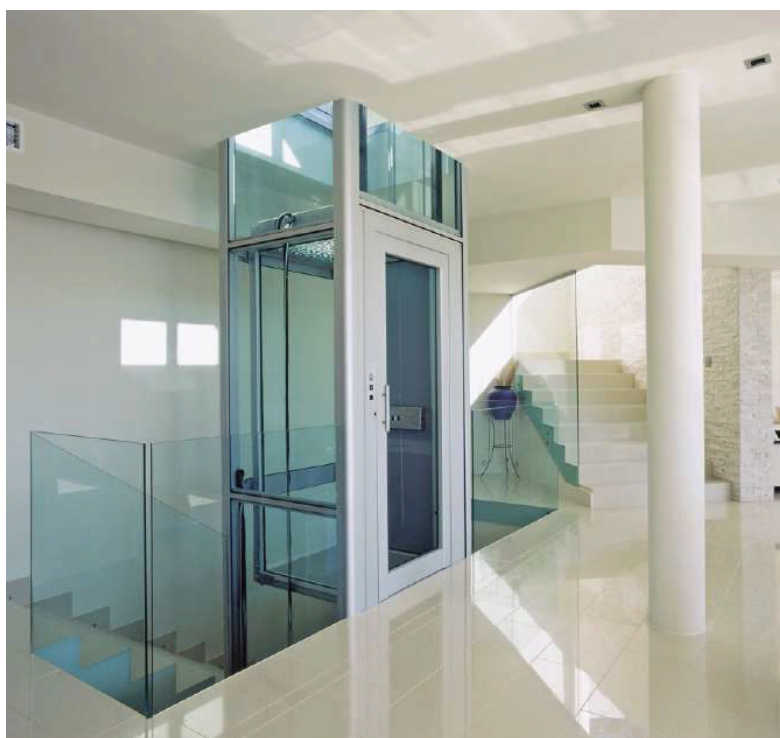




Home Lift is the elevator designed to meet vertical mobility needs in public and private buildings. It is the ideal solution for elderly and impaired mobility persons who can finally move autonomously and free from stairs.

It is a modern product, designed and manufactured to meet a wide range of needs from the garage to the roof, you can move effortlessly up to 4 floors.

PASSENGER
CAPACITY 04-16





ESCALATOR

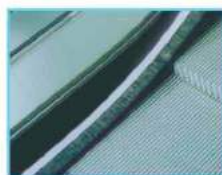
- ▶ Advantageous performances of escalator the truss utilizes first class rectangle steel with unique structure, high strength and nice anti-corrosion durable features.
- ▶ The overall design is concise and smooth and compatible.
- ▶ The advanced international craftsmanship ensure the accuracy of steps.
- ▶ The large size diameter of step roller operates minimizes the noisy anti-corrosion durable features.
- ▶ The human-oriented handrail entrance is secured by brush.
- ▶ The skirt together with interior and outside deck uses deluxe stainless steel.
- ▶ Etched stainless steel front panels are available with various varieties. The super CPU main board monitors the operation in real time.
- ▶ If any abnormal situation occurs, It automatically brakes and records the malfunctions code.
- ▶ Customer can choose VVVF control to control running speed, the energy saving performance is obvious. it can prolong product life and reduce the operation cost.



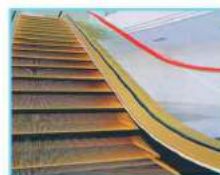
COMB LIGHTING



SKIRTING BRUSH



SKIRTING LIGHTING



Designs

Artistic designs with smooth and natural lines

Standard



Operation



Robust

Strength with comfort and low noise



Safety

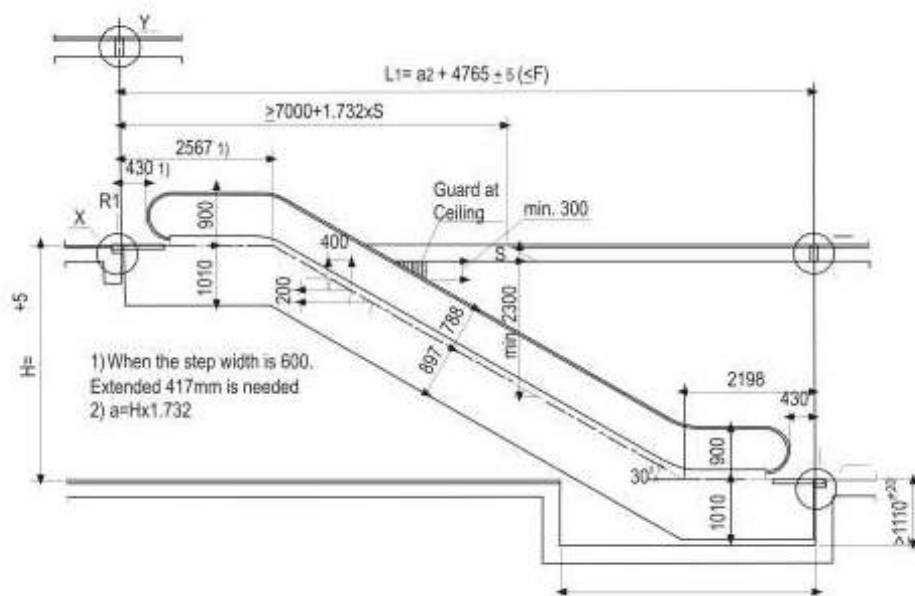
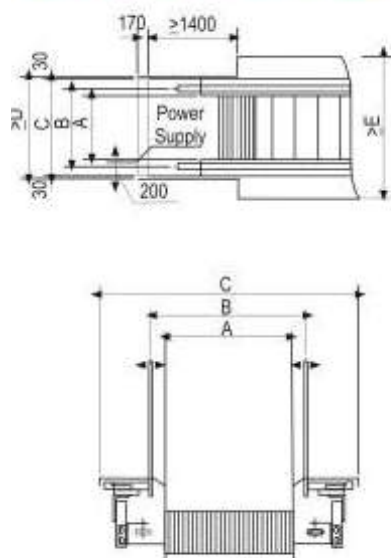
Elimination of the Source of Safety Hazards



ESCALATOR



S310-30K COMMERCIAL ESCALATOR



Dimension

	Step600	Step800	Step1000
W1 (Step width)	600	800	1000
W1 (Handrail width)	910	1110	1310
W3 (pit width)	1340	1540	1740
W4 (Escalator width)	1200	1400	1600
W5 (Well width)	1260	1460	1660
W6 (Well width)	1910	2110	2310

Note : 1. The unit of all dimension in drawing is milimeter.
 2. For outdoor escalator, the dimension marked * in drawing shall be 1340.
 3. Referring to page 52 for details of A.

Step Width	Raise Height	G(KN)	3000	3500	4000	4500	5000	5500	6000
	Net Weight	R1 (KN)	62	66	69	73	77	80	85
	Reaction of	R2 (KN)	58	62	65	69	72	76	81
	Support	P(KW)	50	53	57	61	64	68	73
	Power	G (KN)	5.5			8		11	
	Net Weight	R1 (KN)	59	62	65	69	72	75	79
	Reaction of	R2 (KN)	52	55	58	61	64	67	70
	Support	P(KW)	43	47	50	53	56	59	62
	Power	G (KN)	5.5			8			
	Net Weight	R1 (KN)	56	59	62	65	68	71	75
	Reaction of	R2 (KN)	45	48	51	53	56	59	61
	Support	P(KW)	38	40	43	46	48	51	53
	Power	G (KN)	5.5			8			



PERSONALIZE YOUR OWN LIFT

STEP

1

CHOOSE YOUR LAYOUT



LAYOUT 1



LAYOUT 2



LAYOUT 3



LAYOUT 4



↑ LAYOUT 5



↑ LAYOUT 6



↑ LAYOUT 7



↑ LAYOUT 8

CHOOSE A, B & C MATERIALS FROM THE PAGE NO. 26.

PERSONALIZE YOUR OWN LIFT

STEP

1

CHOOSE YOUR DOOR



LAYOUT 9



LAYOUT 10



LAYOUT 11



LAYOUT 12



LAYOUT 13



LAYOUT 14



LAYOUT 15



LAYOUT 16



LAYOUT 17

PERSONALIZE YOUR OWN LIFT

STEP

2

CHOOSE YOUR DOOR

TECHNO



01 SS AUTO DOOR



02 SS TELESCOPIC DOOR



03 GLASS DOOR



04 SMALL VISION
AUTO DOOR



05 FULL GLASS DOOR



06 MANUAL TELESCOPIC
DOOR



07 SWING DOOR



08 IFG DOOR



09 SS AUTO DOOR

PVC MATERIALS



M-1



M-2



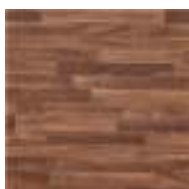
M-3



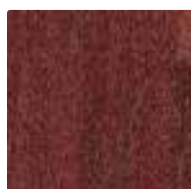
M-4

and
many more
option...

PVC WOODEN MATERIALS



M-5



M-6



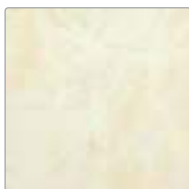
M-7



M-8

and
many more
option...

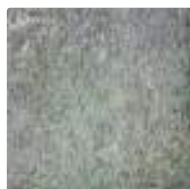
PVC MARBLE FINISH MATERIALS



M-9



M-10



M-11



M-12

and
many more
option...

PVC CARPET FINISH MATERIALS



M-13



M-14



M-15

LUXURIOUS OPTION

- ➔ REAL GLASS FLOORING
- ➔ REAL WOOD FLOORING
- ➔ REAL MARBLE FLOORING



FLOORING PATTERN

AVAILABLE IN MARBLE & PVC



PATTERN 01



PATTERN 02



PATTERN 03



PATTERN 04



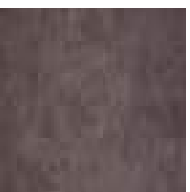
PATTERN 05



PATTERN 06



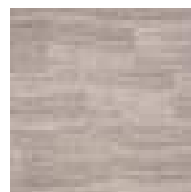
PATTERN 07



PATTERN 08



PATTERN 09



PATTERN 10



DESIGN 01



DESIGN 02



DESIGN 03



DESIGN 04



DESIGN 05



DESIGN 06



DESIGN 07



DESIGN 08



DESIGN 09



DESIGN 10



DESIGN 11



DESIGN 12



STANDARD SHEETS



S01



S02

PREMIUM SHEETS



S03



S04



S05



S06

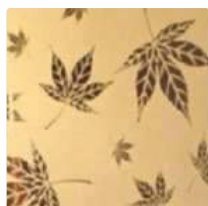


S07

SUPER PREMIUM SHEETS



S08



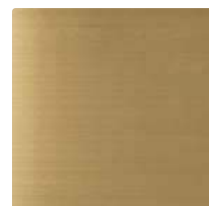
S09



S10



S11



S12

LUXURIOUS SHEETS



S13



S14



S15



S16

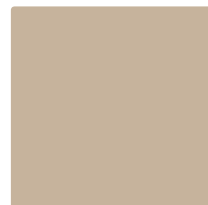
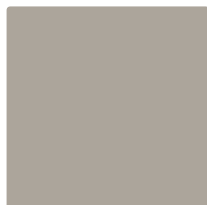
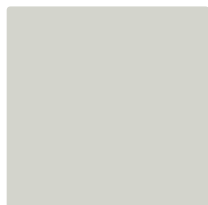
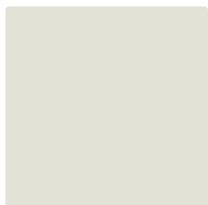


S17

AND MANY MORE...

POWDER COATING

PREMIUM SHEETS



AND MANY MORE...

PERSONALIZE YOUR OWN LIFT

STEP

5

CHOOSE YOUR COP-LOP

TECHNO



BUTTON OPTION

CAR OPERATING PANEL & LANDING OPERATING PANEL



JAGUAR



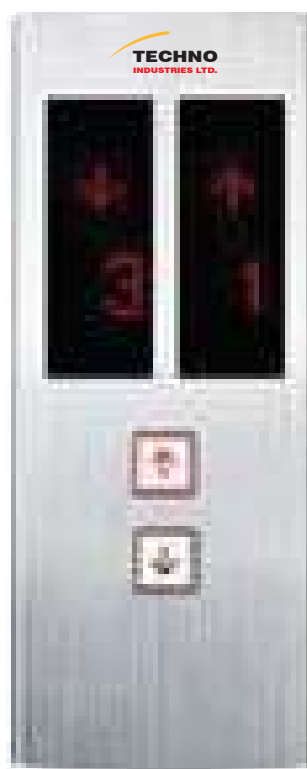
WALL MOUNTED 90°



VOYAGER



JAGUAR



JAGUAR



VOYAGER



TOUCH OPTION

TECHNO
INDUSTRIES LTD.



TOUCH TYPE - 01

TECHNO
INDUSTRIES LTD.



TOUCH TYPE-02

TECHNO
INDUSTRIES LTD.



JAGUAR

TECHNO
INDUSTRIES LTD.



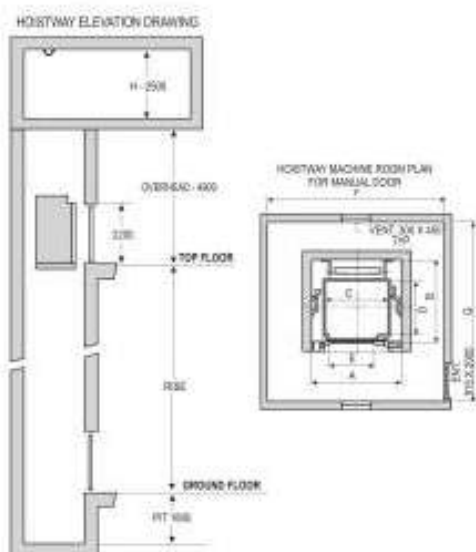
TOUCH TYPE - 03

TECHNO
INDUSTRIES LTD.



VOYAGER

Passenger Elevator Manual Door



HOISTWAY MACHINE ROOM SIZE
PASSENGER LIFT WITH MANUALLY OPERATED DOORS

PERSON	WEIGHT	LIFT WELL		CAR INSIDE		ENTRANCE	MACHINE ROOM		
		WIDTH	DEPTH	WIDTH	DEPTH		WIDTH	DEPTH	HEIGHT
IN KG		A	B	C	D	E	F	G	H
4	272	1800	1250	1100	700	700	3000	3000	2500
5	340	1900	1300	1100	850	750	3000	3200	2500
6	408	1970	1370	1100	1000	750	3000	3500	2500
8	544	1900	1600	1300	1100	750	3200	3800	2500
10	680	1950	1800	1350	1300	1000	3500	4000	2500
13	884	2500	1900	2000	1100	1000	4000	4200	2500
16	1088	2500	1900	2000	1300	1000	4500	4800	2500
20	1300	2500	2050	2000	1500	1000	5000	5000	2500

All dimensions are in mm. This is Standard Data. It may be changed without notice. All load may apply should be minimum 220 mm thick or 150 mm R. C. C.

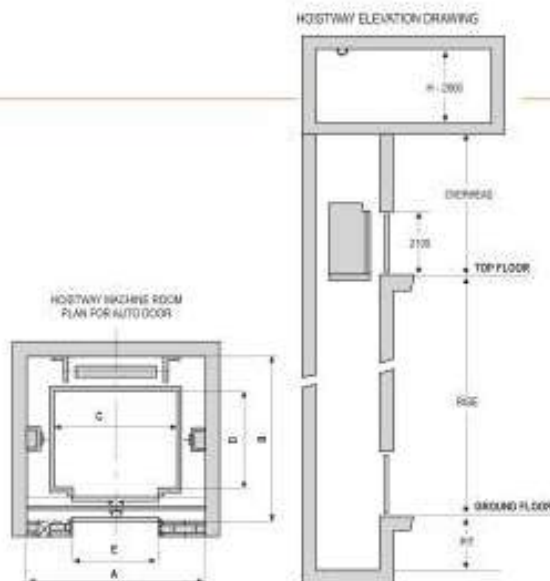
Passenger Elevator Auto Doors



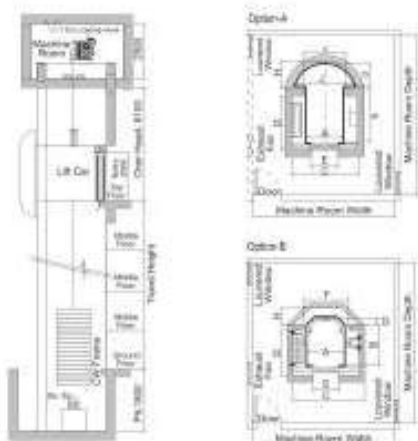
HOISTWAY MACHINE ROOM SIZE
PASSENGER LIFT WITH AUTO DOORS

LOAD	PERSON	WEIGHT	LIFT WELL		CAR INSIDE		ENTRANCE	MACHINE ROOM			UP TO 1.5 M/S		UP TO 2.5 M/S	
			WIDTH	DEPTH	WIDTH	DEPTH		WIDTH	DEPTH	HEIGHT	Pt	D.H	Pt	D.H
IN KG			A	B	C	D	E	F	G	H	K	M	K	M
4	408	1000	1650	1100	1000	800	3000	3500	2500	1800	4800	2600	4700	
6	544	1000	1900	1300	1100	800	3200	3500	2500	1800	4800	2600	4700	
10	680	1900	2000	1350	1300	800	3800	4000	2500	1900	4800	2600	4700	
13	884	2500	1900	2000	1100	1000	4300	4200	2500	1900	4800	2600	4700	
16	1088	2500	2000	2000	1300	1000	4500	4800	2500	1900	4800	2600	4700	
20	1300	2500	2300	2000	1550	1000	5000	5300	2500	1800	4800	2600	4700	

All dimensions are in mm. This is Standard Data. It may be changed without notice. All load may apply should be minimum 220 mm thick or 150 mm R. C. C.



Capsule Elevator



Option-A

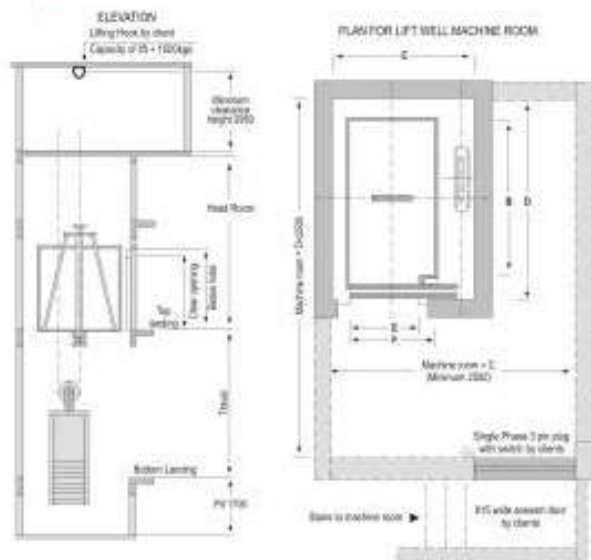
Load		Car inside					Lift Well				Entrance
Person	Wgt.	A	B	J	G	C	D	F	H	E	
10	680	1100	1300	1400	600	2200	1420	1330	1300	800	
13	884	1200	1400	1550	700	2400	1520	1430	1300	900	
16	1088	1300	1500	1700	750	2600	1620	1530	1300	1000	

Option-B

Load		Car inside			LIFTWELL				Entrance
Person	Wgt.	A	B	G	C	D	F	H	E
10	680	1250	1300	200	2250	1450	1450	850	800
13	884	1400	1400	300	2400	1550	1630	850	900
16	1088	1550	1500	350	2600	1700	1690	750	1000



Hospital Elevator



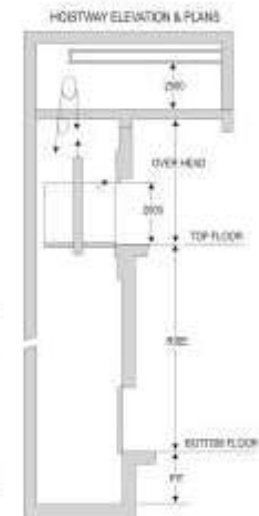
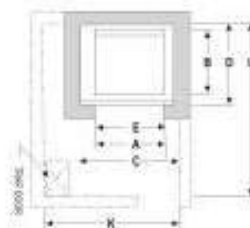
DIMENSIONAL DETAILS: HOSPITAL LIFT

Type	Capacity	A	B	C	D	E	F	G	H	I	J	K	L	M	N	O	P	Q	R	S	T	U	V	W	X	Y	Z
Wheel Chair	544 kg	1190	1300	1700	1900	800	900	1000	1100	1200	1300	1400	1500	1600	1700	1800	1900	2000	2100	2200	2300	2400	2500	2600	2700	2800	2900
Stretcher	750 kg	1080	1190	1700	2500	800	900	1000	1100	1200	1300	1400	1500	1600	1700	1800	1900	2000	2100	2200	2300	2400	2500	2600	2700	2800	2900
Small Bed	1020 kg	1200	2190	1900	2500	900	1100	1200	1300	1400	1500	1600	1700	1800	1900	2000	2100	2200	2300	2400	2500	2600	2700	2800	2900	3000	3100
Standard Bed	1360 kg	1600	2490	2500	2800	1200	1400	1500	1600	1700	1800	1900	2000	2100	2200	2300	2400	2500	2600	2700	2800	2900	3000	3100	3200	3300	3400

All Dimensions are in mm size.



Goods Elevator

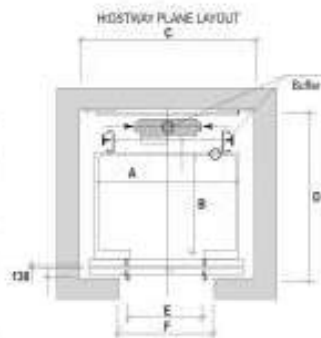
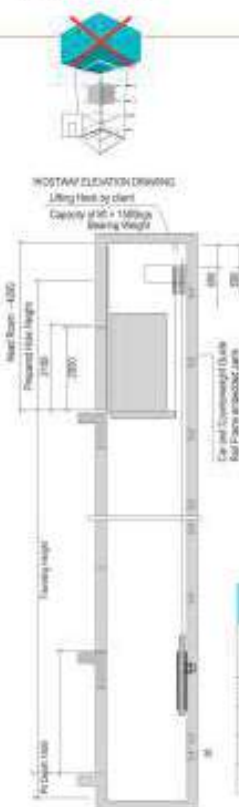


HOISTWAY MACHINE ROOM SIZES

Capacity	Car Inside		Lift Well	Clear Opening		Well Opening		Machine Room		PI Depth	Over Head	Speed
LOAD IN KG.	A	B	C	D	E	F	G	H	Height			M/Sec
500	1200	1200	1650	1650	600 X 2000	1150 X 2225	2100	2700	2500	1800	4800	0.35
1000	1700	1800	2400	1900	1200 X 2000	1625 X 2225	3500	3000	2500	1800	4800	0.50
1500	2000	2000	2700	2200	1500 X 2000	2000 X 2225	4000	4000	2500	1800	4800	0.50
2000	2200	2500	2900	2800	1500 X 2000	2000 X 2225	4000	4200	2500	1800	4800	0.50
2500	2500	2500	3200	2800	1800 X 2000	2100 X 2225	4000	4500	2500	1800	4800	0.50
3000	2800	3200	3500	3000	1800 X 2000	2100 X 2225	4500	5200	2500	1800	4800	0.50
4000	3000	4000	3400	4300	2000 X 2000	2800 X 2225	4500	6300	2500	1800	5200	0.50



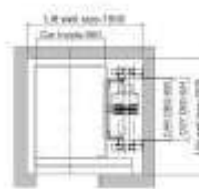
Home Elevator



HOISTWAY MACHINE ROOM SIZES

Capacity	Lift Well	Car Inside	Clear Opening	Clear Opening at landing				
Person	KGS	C	D	A	B	E	F	G
							Auto Door	Manual Telescopic
4	408	1800	1400	1200	800	700	780 / 2100	1400 / 2300
6	544	1900	1600	1300	1100	800	800 / 2100	1600 / 2300
10	886	1900	1800	1300	1300	800	880 / 2100	1800 / 2300
12	984	2200	1800	1600	1400	900	980 / 2100	1700 / 2300

All Dimensions are in mm size.



SPECIFICATION

ITEM	132	160	180
Frequency	12 Hz	Rope Dia	6 mm
Voltage	230 VAC	No. of Ropes	4
Wt./Hr	0.75/1	Lifting Capacity	300 kg
Weight	70 kg	Lift Speed	0.33 m/s
Brake	Push-up: 220 VDC	Max. Travel	15 Mts.
Voltage	Hoisting: 110 VDC	Baths/Day	100

All Dimensions are in mm. This is General Data. It may be changed without notice.



AUTO RESCUE DEVICE

In the event of power cut off, the elevator will continue to operate till the nearest floor and open the doors to let passengers out safely.

INFRARED LIGHT CURTAIN

Full height infra red curtain with multiple cross-crossing light beams detect the smallest obstruction in door path and stop doors from closing.

OVER LOAD SENSOR WITH AUDIO VISUAL INDICATION

On overloading of the lift, car audio-visual indication is provided and doors are kept open till excess load is removed.

CAR EMERGENCY LIGHT & FAN

The emergency light is always illuminated in normal condition and switches itself automatically to battery back up in case of power failure as shown in picture. (Block-D) Fan also operates for minimum 20 minutes after power failure.

EMERGENCY ALARM & 'PUSH TO TALK'

In case of any emergency or power failure, help can be obtained by alarming or by communicating at lobby through this system which is battery operated and self charging as shown in picture. (Block-E)

SAFETY IN CASE OF OVER TRAVEL

Three phase electric power is disconnected from control panel and motor, the moment elevator car moves beyond the limit of top and bottom terminal floors causing immediate application of the brake to bring the elevator to halt.

SAFETY IN CASE OF ROPE BREAKAGE

In the elevator of breakage of ropes, elevator speed exceeds the rated speed in the downward direction due to gravitational acceleration. the over speed governor activates the clutch mechanism thereby switching off main controls and jamming the elevator car safety on guide rails.

CAR FAN AUTOMATIC SLEEP

Car fan automatically stops when there are no registered floor calls resulting into saving in power and enhancing its life.

VOICE ANNUNCIATOR WITH MUSIC

This system provides detailed information to passengers related to next floor, direction of movement, door opening/closing, scheduled operations and other information depending on the building needs. This system features natural electronic voice synthesizers.





Exclusive Distributor



Guard Tech Engineering Ltd.

www.guardtechbd.com

Corporate Office :

Guard Tech House C-14, Eastern Housing-2, South
Kallyanpur, Mirpur Road, Dhaka-1207, Bangladesh
Hotline : +88-02-8091112, +88 01623-330000
E-mail : info@guardtechbd.com

Branch Office :

203-Al Siraz Tower, 4th Floor, Kusumbag R/A,
Goribullah Shah Mazar, Khulsi, Chittagong - 4216



Registered Office & Works

TECHNO INDUSTRIES LTD.

Plot No. 5002, Phase IV G.I.D.C, Vatva,
Ahmedabad - 382 445 Gujarat - India

Phone : +91-079-2584 0266

Telefax : +91-079-2584 0277

Email : info@technoelevators.com

Website : <http://www.technoelevators.com>